



## Parks, Culture, and Recreation Board Meeting Agenda

Refer to the bottom of the agenda for meeting information.

---

Wednesday, October 1, 2025

5:30 PM

Council Chambers and Online

---

### 1. Call to Order

### 2. Roll Call

### 3. Land Acknowledgment

We, the City of Lacey, are on the ancestral land of the Tribal People of the Treaty of Medicine Creek, including the Nisqually Indian Tribe and Squaxin Island Tribe. We acknowledge and remember those Tribal People not recognized today who were absorbed or relocated into other tribes for survival. We recognize the ancestors and their descendants who are still here. We recognize and respect the Tribal People of the Treaty of Medicine Creek as the traditional stewards of this land since time immemorial and their role today in taking care of these lands in perpetuity. We recognize and have the responsibility to call attention to the histories of dispossession, forced removal, and abridged treaty rights that allowed our nation, state, and city to develop as they have today. We recommend that community members read the [Medicine Creek Treaty of 1854](#).

### 4. Approval of Agenda and Minutes

- A. Approval of the Agenda\*
- B. Approval of August 6, 2025 Meeting Minutes\*

### 5. Public Comment

Refer to the bottom of the agenda for instructions on how to provide public comment.

### 6. Business Items

- A. **Youth Councilmember Introduction**  
Aryan Kumar, Youth Councilmember
- B. **Special Events Updates**  
Jeannette Sieler, Recreation Supervisor
- C. **William A. Bush Park Playground\***  
Jenny Wilson, Senior Parks Planner
- D. **Enhancements Program Update\***  
Jenny Wilson, Senior Parks Planner
- E. **Alcohol Special Event Application\***  
Sue Falash, Recreation Manager

### 7. Reports

- A. Commissioners
- B. Chair
- C. Recreation Manager
- D. Parks Maintenance Supervisor
- E. Senior Parks Planner
- F. Director

## 8. Adjourn

### **\*Vote Requested**

### **Next Meeting:**

**Parks, Culture, and Recreation Board Meeting:** November 5, 2025, 5:30 p.m., Council Chambers and Online

---

### **Attend Remote or In Person**

There are several ways to attend the Parks, Culture, and Recreation Board meeting:

- In Person: Council Chambers at Lacey City Hall  
420 College Street SE, Lacey, WA 98503
- Zoom: [https://us02web.zoom.us/webinar/register/WN\\_Kk5ITlz\\_Sgii6uxQqw1xlw](https://us02web.zoom.us/webinar/register/WN_Kk5ITlz_Sgii6uxQqw1xlw)
- Website: <https://cityoflacey.org/government/public-meetings/>
- YouTube: <https://www.youtube.com/watch?v=jzSvNio6E1A>
- Phone: (888) 788-0099 or (877) 853-5247 (Webinar ID 885 4349 1027)

### **Verbal Public Comment**

Each speaker is limited to three minutes. Comments are welcome on matters connected to City business or specific agenda items.

Prior to starting your comments, please provide your:

- a. Name
- b. City of residence or connection to the City
- c. Topic or subject matter of your comments

The opportunity for verbal public comment is available in-person or by Zoom:

- In Person: Use the sign-up sheet at the meeting location.
- Zoom: Preregister using the following Zoom link no later than two hours prior to the meeting:  
[https://us02web.zoom.us/webinar/register/WN\\_Kk5ITlz\\_Sgii6uxQqw1xlw](https://us02web.zoom.us/webinar/register/WN_Kk5ITlz_Sgii6uxQqw1xlw)  
Instructions and access details will be provided once registration is complete.

### **Written Public Comment**

Please submit written public comments to [PRPublicComment@cityoflacey.org](mailto:PRPublicComment@cityoflacey.org) up to two hours prior to the start of the meeting. Public comments received by the deadline will be sent to Commissioners prior to the meeting, but will not be read at the meeting. Emailed correspondence that is received throughout the month will be included in the next available Parks, Culture, and Recreation Board packet under Correspondence.



## Parks, Culture, and Recreation Board Meeting Minutes

---

Wednesday, August 6, 2025

Council Chambers and Online

---

### 1. Call to Order

Chair Wheeler called the meeting to order at 5:30 p.m.

### 2. Roll Call

Commissioners Present: Chair Aram Wheeler, Vice Chair Laurie Davies, Bill Fosbre, Michelle Gipson

Commissioners Absent: Hilary Dykstra, Gary Larson, Annette Roth

### 3. Land Acknowledgment

Chair Wheeler read the land acknowledgment.

### 4. Approval of Agenda and Minutes

#### A. Approval of the Agenda

Vice Chair Davies motioned to approve the agenda. Commissioner Gipson seconded. Motion carried.

#### B. Approval of June 4, 2025 Meeting Minutes

Vice Chair Davies motioned to approve the minutes. Commissioner Gipson seconded. Motion carried.

### 5. Public Comment

One (1) written public comment was received.

### 6. Business Items

#### A. Regional Athletic Complex Updates

Sean Finney, Recreation Supervisor

Recreation Supervisor Finney provided programmatic and revenue updates for the Regional Athletic Complex.

**B. 2025 Work Plan Update**

Jenny Wilson, Senior Parks Planner

Senior Parks Planner Wilson presented updates to the 2025 Work Plan.

**C. 2026 Budget Requests**

Jenny Wilson, Senior Parks Planner

Senior Parks Planner Wilson reviewed the department's 2026 budget requests.

**D. September Parks Board Tour**

Jenny Wilson, Senior Parks Planner

Senior Parks Planner Wilson solicited Commissioner feedback for the September parks tour.

**7. Reports**

**A. Commissioners**

Vice Chair Davies shared excitement for the newly resurfaced tennis courts at Rainier Vista Community Park. Commissioner Gipson shared appreciation for the summer event series.

**B. Chair**

No report.

**C. Recreation Manager**

Recreation Manager Falash presented the 2025 Quarter 2 Program Updates.

**D. Parks Maintenance Supervisor**

Senior Parks Planner Wilson provided the Parks Maintenance Supervisor report. Staff have performed the following since the last board meeting.

- Promoted a Maintenance Assistant to Journey Level, hired two Maintenance Assistants, and onboarded four seasonal staff.
- Contributed over 200 hours of support services for Lacey Fireworks Spectacular.
- Completed the following repairs and replacements
  - Replaced 2 large BBQs at Wonderwood Park picnic shelter
  - Mitigated 16 acts of graffiti
  - Replaced broken bollard at Wonderwood Park
  - Removed 3 rusted barbecues at Bush Park

- Repaired play toy at Avonlea Park
- Replaced broken basketball rim at Lakepointe Park
- Repaired gate latch post at Depot Park
- Completed the following improvements
  - Tilled Rainier Vista Community Park volleyball courts
  - Assisted contractor with field visits for Parks Asset Condition Assessment
  - Added more boulders to Wonderwood Park parking lot to prevent public from driving in unauthorized areas
  - Contracted re-surfacing of Rainier Vista Community Park tennis courts
  - Worked with the City of Lacey Transportation Division to mitigate parking issues at Long Lake Park reported by the Lacey Police Department
  - Cleared frontage fence-line at Greg Cuoio Park in anticipation of the park opening
  - Painted bathroom floors at the Regional Athletic Complex and Rainier Vista Community Park
  - Renovated soccer fields 2 and 3 at the Regional Athletic Complex
  - Applied binder material to pour in place rubber surface at the Depot Park playground
  - Groomed the synthetic fields at the Regional Athletic Complex
  - Pruned approximately a half mile of Sumac along the Woodland trail and Pacific Ave
  - Installed a bike rack at Depot Park

#### **E. Senior Parks Planner**

Senior Parks Planner Wilson reported:

- Commissioner Fosbre was reappointed by Mayor Ryder to another term on the Parks, Culture and Recreation Board.
- Staff are awaiting official results from Thurston County Auditor's Office relevant to Proposition 1, Lacey's proposed Metropolitan Parks District. The County's results should be certified August 19th. Preliminary results show that Proposition 1 did not receive the necessary Lacey voter support in the August 5, 2025 primary election. Staff completed extensive community outreach, including 27 presentations and attendance at five major community events.
- Staff are conducting a project supported by Hawks Prairie and Lacey Rotary Clubs to create trail maps for several Lacey Parks.
- During the Washington State Senior Games (WSSG) opening ceremony, a ribbon-cutting will be held at Rainier Vista Community Park to celebrate the completion of the tennis court resurfacing project, which included adding line overlays for pickleball. This project was funded in partnership with the Thurston County Pickleball Club and support from WSSG.

- The Woodland Creek Community Park bridge project contract was awarded to Hammersley Contracting. Construction will continue through October.
- Greg Cuoio Park construction is progressing. While the park remains closed to the public, a soft opening is expected this fall, with a grand opening celebration in spring 2026.
- The department has been awarded over \$720,000 for 2025-2027 from the Washington Recreation and Conservation Office to add 4 pickleball courts, safety netting, and ping pong to Rainier Vista Community Park and to replace the playground at Bush Park.

**F. Director**

Senior Parks Planner Wilson provided the Director's report. The Department celebrated *July is Parks and Recreation Month* with a social media campaign and presentation at the July 15 City Council Meeting.

**8. Adjourn**

Chair Wheeler adjourned the meeting at 6:44 p.m.

# NEW PLAYGROUND PROJECT

## WILLIAM A. BUSH PARK

### About The Project

The existing playground for ages 5-12 was installed in 1995 and is now nearly 30 years old—making it the oldest play structure in Lacey’s park system.

In 2024, vandalism caused significant damage. Due to the age of the equipment, replacement parts were no longer available, leading to the removal of the swings and a slide. In addition, there are no ground-level play elements.

This project will bring a brand-new playground to Bush Park—featuring improved accessibility, modern play equipment, and plenty of opportunities for fun!

Bush Park is a cherished neighborhood gathering place, and we want the community—especially playground users and kids—to help choose the next playground design.



### Community Input and Design

- Four draft playground design options were created, each with a unique theme and a mix of play features. As the project moves forward, small changes may be made before construction.
- The community had several opportunities to vote on their favorite design:
  - Horizons Elementary School Open House
  - City Hall (Sept. 22-Oct. 1)
  - Park Onsite Event (Sept. 27)
  - Park Onsite Event ( Sept. 30)

### Project Goals

- More Fun! – New playground options with more opportunities for active and imaginative play.
- Improved Accessibility – All options include a rubber safety surface that’s more accessible.

### Partnerships

This project is made possible through community partnerships and grants

- Gateway Rotary Club – Championing this as a legacy project and fundraising for three years to make it possible.
- Washington State Recreation and Conservation Office – Local Parks Program – Providing grant funding.

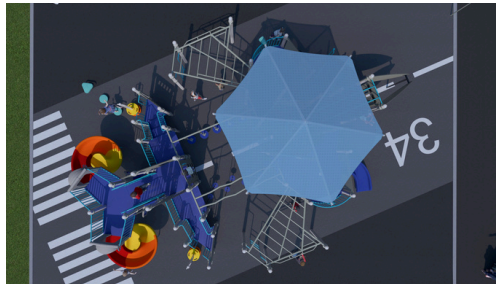
### Park History

The park is named in honor of William A. Bush, former mayor of Lacey and lifelong advocate for parks and recreation. Over eight acres of land was dedicated to the City of Lacey for use as a neighborhood park. The park was first developed in 1995, with additional amenities added in 2008 using voter-approved bond funds.

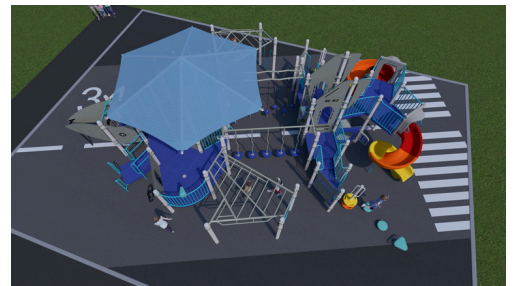


**LACEY PARKS**  
CULTURE & RECREATION

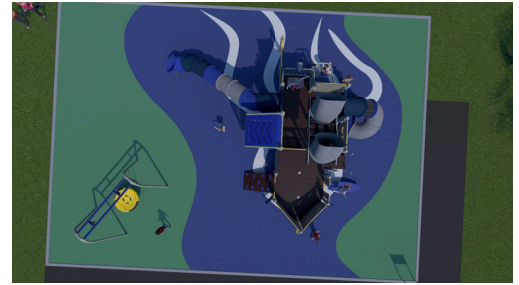
# AIRPLANE



Adventure is cleared for take-off on the Air Force 2! This aviation-inspired playground features double spiral booster slides. Navigate the plane by ladder, climbing wall, or the many traversing features! The surfacing is a bold, immersive design that mimics a runway, setting the scene for high-flying fun! The Air Force 2 brings energy, movement, and creativity to your daily play. With 17 elevated and six accessible ground features, this playground offers a soaring good time for all children!



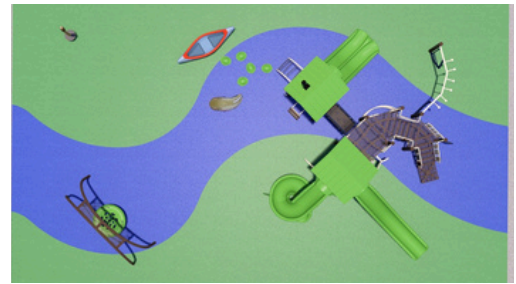
# TUGBOAT



All aboard the Lacey tugboat! This double-deck boat-themed playground invites young explorers to let their imagination run wild! Key features include a spiral tube slide, an immersive straight tube slide, an enclosed climber, a multi-user swing, and 11 elevated and 5 ground-level play features! Once you've set sail, you can make your escape through the slides or hop on the surfboard to catch some waves! Board the boat, chart your course, and slide into action!

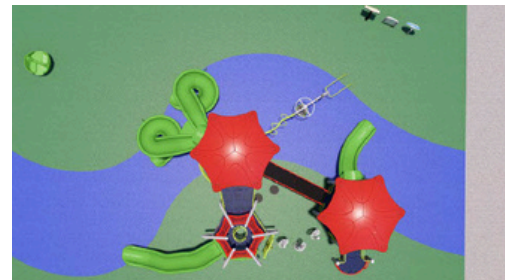


# STREAM

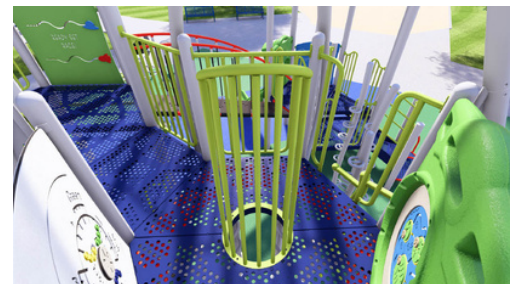


Imaginative play flows just like the water in this Stream themed playground! This playground features extensive ground play elements, including a cattail spinner, a realistic canoe and trout, and sculpted turtles! Other highlights include a woodland tree house-style playset with double zip slides and lots of climbing options. The multi-user swing is designed for group fun! With 10 elevated play features and nine accessible ground features, this playground offers an enriching sensory and play experience for children of all abilities!

# NATURE



Step into a world of imaginative play, designed to spark creativity and adventure, with this eye-catching nature-themed playground featuring vibrant colors and an extensive variety of play features! This playground blends natural aesthetic with dynamic fun! Play features include a tulip climber, lots of hand-play puzzle panels, double twin spiral slides, and a duo-spinner. This playground features 18 total elevated play elements, six ground-level play features, encouraging physical activity and imaginative play!



## **Enhancement Program**

One application was submitted for consideration in the August 2025 Enhancement Program. The committee recommends not approving the request, but offered a possible future alternative.

## **Cameras at the Regional Athletic Complex – Not Approved**

### **Request Summary:**

The United States Specialty Sports Association (USSSA) Washington Division, which hosts tournaments at the RAC, requested installation of five cameras at the baseball fields to livestream and record games. USSSA would purchase the cameras (\$1,000-\$1,200 each) and contract with a service provider (Vewbie) for installation and streaming services.

Although major maintenance would be managed by USSSA, additional City resources needed to support the project included internet access, Information Services staff for network compatibility, and Maintenance staff for electrical infrastructure and minor ongoing adjustments.

Video would be stored and accessed through USSSALive.com and made available to City staff, other tournament directors, and the public.

Questions arose regarding the potential monetization of video content through USSSALive.com and Vewbie, including ad sales and subscription or pay-per-view options for some games. The applicant explained that their non-profit organization is compensated by USSSA and that proceeds from viewership are reinvested into the community by partnering with municipalities to improve park experiences.

After reviewing this request with other City departments, The Enhancements Committee is recommending not approving this request due to several challenges;

- **Technology Limitations:** Current RAC internet bandwidth is insufficient to support livestreaming and camera services.
- **Subscription and Access Concerns:** The USSSALive.com platform includes subscription or pay-per-view models. It is unclear how these

are applied, raising concerns that RAC games could require additional viewer costs.

- **Advertising and Sponsorship Conflicts:** Website advertising may conflict with existing City sponsorship and marketing policies. It is unclear who controls ad sales, whether separate agreements exist with Vewbie, or if the City would have the ability to review, restrict, or approve advertising content. Additionally, no revenue-sharing model was identified for the City.
- **Data Storage, Access, and Privacy:** Video storage and streaming would be managed by third-party platforms. This creates unresolved questions regarding ownership of data, video retention schedules, and compliance with public records disclosure laws.
- **Records and Retention Issues:** Lack of clarity exists on how long recordings would be retained, how retention schedules would align with legal requirements, and how reliably multiple City departments could access footage. These concerns carry important legal and operational implications.
- **Ongoing Costs and Responsibilities:** While USSSA indicated they would handle major maintenance, the City would still need to invest resources for electrical infrastructure and commit staff capacity for minor maintenance, adding to already limited resources.

### **Possible Future Alternative**

Although the request was declined at this time, an alternative approach for future consideration was offered to accept the camera donations. This could be done at a later date when the infrastructure is in place to support the streaming. In this scenario, we could contract directly with vendors for installation, service, and ongoing management to ensure alignment with City policies and operational standards.



## SPECIAL EVENT & PARK RENTAL APPLICATION/PERMIT NO.:

**Return to: City of Lacey Phone: (360) 491-0857 Parks, Culture and Recreation Department Website:**

[www.cityoflacey.org](http://www.cityoflacey.org)

420 College St SE

Lacey, WA 98503-1238

This application must be completed, signed and forwarded to the City of Lacey at least thirty (30) days prior to the first day of the event. All events shall meet Fire, Life Safety and Occupancy requirements. Any misrepresentation in this application or deviation from the final agreed upon route and/or method of operation described herein, may result in the immediate revocation of the permit, even during the event. Please type or print information clearly and attach additional sheets as necessary.

**DATE SUBMITTED:** (complete shaded area below and submit up to 15 months prior to event to reserve your date).

Event Name: ***SWSA & FC OLYMPIA PRESENT SOCTOBERFEST***

Day(s) of the Week: ***SATURDAY*** Time: ***11AM-7PM*** Event Location: ***OCTOBER 18, 2025***

Facilities to be used (check): Park Street Sidewalk Other ***TOURNEY TENT HQ AT RAC SOCCER FIELDS***

Set-Up Date/Time: ***10/18/2025*** Begin: ***11AM*** Take-Down Date/Time: ***30 Min*** Dismantle: ***7:00PM*** Date: ***10/18/25***

Purpose of Event: ***SWSA & FC OLYMPIA PARTNERING ON ADULT SOCCER EVENT***

Event Crowd Size Participants Spectators Volunteers/Personnel Has the event been produced previously?

***YES IN 2024 - 350 REGISTERED ADULTS***

Is this an event involving political or religious activity intended primarily for the communication or expression of ideas? ***No***

**APPLICANT INFORMATION** (Complete remainder of application and submit at least 30 days prior to event.)

Organization Name: ***OLY SOCCER FOUNDATION***

Mailing Address: ***9209 VANCOUVER DR NE LACEY, WA 98516***

Applicant's Name: ***RYAN PERKINS*** Title: ***PRESIDENT***

Telephone Number: ***360-789-6050*** ***RYAN@OLYTOWNFC.COM***

## FEES AND PROCEEDS

Admission Fee: **NO** Yes If yes, how much? *N/A*

Any Vending Sales: **NO** Yes If yes, check all that apply: *N/A*

Food Beverage T-Shirts/Hats Buttons Balloons Other: (please specify): *N/A*

## SPECIAL SET-UPS REQUESTED

Check appropriate category below and fill in details or numbers, size and type. **Leave blank, if not applicable.**

Alcohol: (complete Alcoholic Beverage Area section of Application on page 6)	Will alcohol be served or available? <b>CANNED BEER</b>	Will alcohol be sold? <b>APPLICANT (BEER ONLY)</b>
Amplified Sound: Noise Variance: <b>NO</b>	Noise Variance required for amplified sound after 10 p.m.	Basis for request and hours of variance:
Animals: Yes <b>No</b>	How many?	Species:
Booths/Vendors: Yes <b>No</b>	How many booths? How many vendors?	Where:
Signage: Yes <b>No</b>	How many?	Size?
Electricity Source: Yes <b>No</b>	Generators:	How many? Size:
Fireworks/Fire Performance: Yes <b>No</b>	Ground Aerial <b>N/A</b>	Pyrotechnic Company:
Portable Restrooms: Yes <b>No</b>	How many?	Handicapped Accessible: Yes No
Rides: Yes <b>No</b>	How many?	Type:
Staging/Scaffolding: Yes <b>No</b>	How many?	Height:
Tents/Canopies: <b>Yes</b> No	How many? <b>3</b>	Size: (3) <b>10X10</b>
Vehicles: Yes <b>No</b>	How many?	Size and Gross Weight

**SOLID WASTE COLLECTION INFORMATION (IF APPLICABLE)**

Have you contacted Waste Management concerning garbage collection? Yes **No**

Please describe your arrangements: \_\_\_\_\_

Are you providing recycling containers: **Yes** No

If Yes, please describe:

**WE WILL HAVE MULTIPLE CANS OUT FOR RECYCLING CANS**

**PUBLIC SAFETY (IF APPLICABLE)**

Attach a clear/legible site and route map, with the following indicated:

- North, indicated by directional arrow ( ↑ )
- Names of surrounding streets, with one-way streets marked
- Number and placement of barricades, traffic control, signs, etc.
- Location of the Alcoholic Beverage Area
- Any other details you think are helpful

If your event has a 5K or 10K run, indicate which starting point and route is requested:

- Huntamer Park and Chehalis Western Trail (5K or 10K)
- Horizon Elementary and Chehalis Western Trail (5K or 10K)
- Rainier Vista Community Park and Chehalis Western Trail (5K or 10K)
- Meridian Campus and the William Ives Trail (5K maximum)
- Regional Athletic Complex Trail and 'cross country' (5K maximum)

What are your plans for on-site security/monitors/route control?	What are your plans for medical assistance?
<b>WE WILL HAVE SIGNS AND CROWD CONTROL</b>	<b>SWSA &amp; FC OLYMPIA PROVIDING ON-SITE ATC</b>
<b>THIS ALSO INCLUDES ID CHECK AT ENTRY</b>	<b>WE ALSO HAVE EMERGENCY PREP PLAN</b>
<b>ID CHECK AT POURING STATION</b>	
<b>CLEARLY OUTLINED ENTRY &amp; EXIT</b>	



## SECURITY AND DAMAGE DEPOSIT/BOND INFORMATION

Applicant shall provide a deposit or bond (in the form of an irrevocable letter of credit, certified or cashier's check made payable to the City of Lacey, or cash) to cover the costs of restoration, rehabilitation and cleanup of the area, public safety and police law enforcement coverage, and any other extraneous costs resulting from the special event. The City of Lacey Public Works Department will determine the appropriate amount, but in any event, the minimum amount of deposit or bond will be five hundred dollars (\$500) per day for the duration of the event. Bond costs may increase, depending on the size and scope of the event. The bond must be furnished to the City of Lacey at least fourteen (14) days in advance of the opening date of the event.

**Applicant may request a walk-through of the event site no later than a week prior to the event to allow time for any corrections that may or may not be needed. If applicant declines to do a walk-through they are accepting the event site "as is".**

All monies received will be deposited within three business days of receipt. A damage assessment will be made immediately following the close of the event. Accounting of charges incurred as a result of the event will be completed by the City within one business day following the close of the event. Any costs accruing to the City will be itemized and deducted from the deposit or bond. A check for the balance remaining will be returned to the applicant, or if necessary, a bill for collection for costs exceeding the bond amount will be issued to the applicant. In the case of an irrevocable letter of credit, accountable charges will be billed within thirty days, and a release issued. Also at this time, an itemized accounting of charges will be sent to the applicant. Applicant may request an estimate of charges for public safety and law enforcement coverage prior to the event.

Cleanup: The Applicant shall be responsible for maintenance of the Property during the event period. The Applicant shall remove all trash and debris accumulated during the event period from the Property and shall return the Property to the City in the same condition as received. If the Property is not returned in the same condition, Applicant agrees to pay actual costs of cleanup.

## INSURANCE REQUIREMENTS AND LIABILITY

The City of Lacey does not maintain insurance that will respond to claims against the applicant arising out of the use of facilities by the applicant, its members, or those attending the event. Evidence of insurance must be provided no less than 45 days prior to the event. "City of Lacey" at 420 College St SE, Lacey, WA 98503 must be named as an **additional insured** on the policy. Surplus line policies must be issued and stamped in the State of Washington. Minimum Limits as applicable: \$2,000,000 per occurrence, \$3,000,000 general aggregate Commercial General Liability, Liquor Liability, \$1,000,000 Auto Liability. Coverage must be written on an occurrence form by an "A" rated company licensed to conduct business in the State of Washington. Coverage must include liquor liability – including alcohol sales and serving. All limits and coverage may be adjusted to meet exposure as determined by City Risk Manager. The coverage shall contain a provision that the City shall receive in writing, at least 30 days' notice of cancellation of the insurance policy. Special Event Permit will **not** be issued until insurance has been approved.

Indemnification and Hold Harmless: The Applicant shall defend, indemnify and hold harmless the City of Lacey, its agents, employees, volunteers and officials, while acting within the scope of their duties, from all causes of action, demands and claims, including the cost of their defense, arising in favor of the applicant/organization, the applicant's/organization's employees or third parties on account of personal injuries, bodily injuries, death, or damage to property arising out of the acts or omissions of the applicant/organization, its employees or representatives, concessionaires of the event or any other person or entity, except for liability caused due to the sole negligence of the City of Lacey.

Personal Property: All personal property placed at the Property by the Applicant shall be at the risk of the Applicant and the City shall not be liable for any loss or damage to the Applicant's personal property located thereon for any reason whatsoever. The Applicant agrees and understands that the City does not and shall not carry liability, theft or fire insurance on said property to cover the Applicant interest therein.

Survival of Terms: The hold harmless and indemnifications provided in this Agreement shall survive termination of the event.

Release: The Applicant shall additionally hold harmless and release the City Manager or designee from any claims for

damages, including but not limited to economic, consequential or other monetary damages suffered by the Applicant, in the event that the City Manager or designee revokes the Permit or otherwise stops the event due to the Applicant's violations of any conditions of the Permit, applicable laws or City regulations.

**FACILITY:** Huntamer Park Woodland Creek Community Park **Regional Athletic Complex** The Depot

Refer to 'CITY OF LACEY ALCOHOLIC BEVERAGE AREA SALES AND CONSUMPTION POLICIES AND PROCEDURE'

Alcoholic Beverage to be served and/or Sold: **Beer ~~Wine~~ Cider**

Hours of Operation of Alcohol Beverage Area: **11AM - 7PM**

(The hours of operation of the Alcoholic Beverage Area may not be longer than 10:00 a.m. – 10:00 p.m.)

Alcoholic Beverage Area Size: Estimated Capacity: **10 X 30 FOOT EVENT TENT**

Type of Barrier: **TEMP FENCING & CROWD CONTROL TENT WALLS**

Who will be serving and dispensing the alcoholic beverage? **MAST POURERS**

Describe the training and experience of the servers. **STATE LICENSED MAST POURERS**

Type of container the alcoholic beverage will be served in? **RECYCLE CANS**

For what charitable or public purpose will the proceeds from the sale be used?

**NON-PROFIT TO PAY FOR FIELD RENTAL DUES FOR OLY SOCCER FOUNDATION + SOUTHWEST SOCCER ASSOCIATION (SWSA) — BOTH ARE NON PROFITS THAT REGULARLY RENT AND NEED THE BEER GARDEN FUNDS TO CONTINUE TO RENT FIELDS AND PAY FOR ANNUAL NON-PROFIT OPERATIONAL BILLS**

The applicant and/or party represents and warrants that all necessary approvals for this agreement have been obtained, and the persons whose signatures appear below have the authority necessary to execute this agreement on behalf of the party/organization indicated.

The applicant agrees to comply with all federal, state and local laws, rules and regulations with respect to the conduct and operations on the premises.

Any misrepresentation in this application or deviation from the final agreed upon method of operation described herein may result in the immediate revocation of the permit.

Applicant's Name - (Printed) Date: **RYAN PERKINS - 9-17-2025**

Applicant's Name (Signed) : *Ryan Perkins*

**(FOR OFFICIAL USE ONLY)**

**APPROVED BY:** Community Development Dept. (Building Official/Fire Marshal) Public Works  
Dept.  
Parks & Recreation Dept.  
Police Dept.  
Public Affairs Dept.  
Risk Manager  
Legal Dept.  
Finance Dept.  
Other

**PERMIT DENIED FOR THE FOLLOWING REASONS:**

**RECOMMENDED APPROVAL WITH THE FOLLOWING CONDITIONS:**

**FEE INITIAL DATE RECEIPT #**

Application Fee:

Damage Deposit:

Additional Costs:

TOTAL PAID:

TOTAL REFUNDED:

PROOF OF INSURANCE? YES / NO

BOND REQUIRED? YES / NO Amount: \$

## Parks, Culture & Recreation Correspondence

Date	From	Correspondence	Response
7.27.25	John K.	Hi, I have a request. The rectangular pavillion on the south entrance seems to have had power run to it previously but hasn't had lights or a power outlet for some time. Is there a way to request these be restored? Very often we have competing groups for power due to bringing crock pots for gatherings. Any help would be appreciated.	<p><b>Reply from Senior Parks Planner Jenny Wilson:</b> Thanks for letting us know about this problem, our electricians have gone out and restored the power today.</p>
8.5.25	Thony P.	Surely there is some standard of measure for a public park to adopt the moniker of Regional Athletic Center? How does such a park with such a large footprint lack so many norms of every usual American desired activity while having so many little used but highly maintained soccer fields and simply one less could have yielded pickleball/tennis and even a public pool? Who were the advisors for council on this?	<p><b>Reply from Senior Parks Planner Jenny Wilson:</b> The Regional Athletic Complex (RAC) was developed to attract regional sports tournaments, which require multiple fields in one location. In addition to serving this regional purpose, the RAC also meets local needs by providing soccer and softball/baseball fields for community sports users.</p> <p>Beyond athletics, the RAC is one of our most heavily used parks thanks to its three playgrounds, walking paths, and year-round accessibility.</p> <p>When the RAC was designed and constructed, Lacey already had tennis courts at Rainier Vista Park, Lakepointe Park, and Wonderwood Park. At that time, pickleball was not yet a widely popular sport. Since then, interest in pickleball has grown significantly. We now have four pickleball courts at Rainier Vista Park and plans to add four more in the near future.</p> <p>The RAC was designed by Bruce Dees and Associates, a landscape architecture firm based in Tacoma. Thank you</p>
8.6.25	Philip Z.	<p><b>Public Comment:</b> I noticed there is a listed agenda and upcoming meeting minutes posted on the Parks Commission website .. I see great things happening.</p>	<p><b>Reply from Senior Parks Planner Jenny Wilson:</b> Hello Mr. Zmuda, Thank you for your military service and congratulations on your new role as a grandpa! I hope you find many opportunities to play in our parks with your family in the years ahead.</p>

Can there be even greater things for our city and neighborhood youth in the future? I say yes, and I see it happening already ... With a recent ground-breaking on the new Greg Cuoio park that will contain a Gold level disc golf course, I see possibility for another potential site and use.

My question and public comment/request is, what is the current use plan for the Meridian Campus North Park located at the 4200 block of Campus Highland Dr NE? As a Greater Meridian Campus home owner (I live in the Campus Fairgrounds neighborhood), I feel I have 'walked' past this Planned site for the last 8 years or so and have seen zero traction/action on this 'planned site'.

We always talk about the kids .. Giving them something to do .. Comment: As a former resident of the DuPont planned community I was greatly disappointed that a park for the kids was never quite accomplished/finished. Whether a skate part, small disc golf course, or something different other than the traditional basketball court/swings that accompany (Meridian Park already provides for this activity).

What about a small disc golf course on the 5-acre layout. There are some community folks who could possibly work this problem And solve it with a small 9-hole layout tailored for smaller tots and they neighborhood youth (no adults should play on this course but should accompany and walk It with the youth).

These are simply ideas of a concerned citizen and neighborhood home owner.  
I'd appreciate any sort of response with possible use and timeline for this wonderful plot of land. Thank you for your consideration.

Very respectfully, Mr. Philip W. Zmuda (Retired Navy Senior Chief and newly minted grandpa/dziadziu)

Thanks for reaching out with your questions and request.

Attached is the original concept plan for the 5-acre site. It includes a small playground, trails, a basketball court, two picnic shelters, an open grass area, and a stormwater retention pond. Please note that this plan is 10–15 years old and would require updates, including community input. For example, current recreational trends and feedback may indicate that features like basketball courts are no longer a top priority. The need for an updated master plan and development of the site is outlined in the Lacey Parks, Culture & Recreation Comprehensive Plan, available [here](#). A key challenge identified in the plan is the need for a stable funding source. Aging infrastructure, increased community requests for new park amenities, and rising maintenance and operational costs all contribute to this ongoing issue.

Just this week, Lacey voters were asked to consider the creation of a [Metropolitan Park District](#) (MPD), which would have provided a stable, long-term funding source for both park development and maintenance. Preliminary unofficial results show that the measure is not passing. As a result, many projects—especially new ones with additional maintenance needs—will likely be delayed or may not move forward. A similar funding measure also failed in 2018.

While I understand your interest in a disc golf course closer to your home, I want to let you know that a Junior Disc Golf Course is available at [Woodland Creek Community Park](#). This course was built and is maintained by the South Puget Sound Disc Golf Association.

As for skate parks, the long-term plan for Meridian Community Park (located nearby) includes potential features such as a sports field, small skate park, or pump

			<p>track. However, without stable funding, these enhancements are also on hold.</p> <p>Thank you again for your interest in Lacey Parks. Please don't hesitate to reach out with additional questions or ideas.</p>
8.14.25	Brian H.	<p>Hello, My name is Brian. I've been a Lacey resident and local business owner for the last 3 years. I also play ice hockey in Tacoma since there have been no ice rinks in Thurston County since the Olympia Ice Arena closed back in the 1940s. I'm reaching out hoping there may be interest from the City of Lacey to explore the opportunity to expand our recreational sports offerings through the construct a community ice arena or by hosting an outdoor rink in the winter months similar to Oly on Ice but with the additional option for attendees to play hockey. If this is not something that would be a priority, I'm hoping you can provide some guidance or direction on how I can pursue this vision.</p> <p>Here are some reasons why I believe this is a beneficial opportunity for the city to explore.</p> <ul style="list-style-type: none"> <li>* There are already local residents hoping for an arena to play ice hockey closer to home. I know, because we talk about it regularly before and after skating at Twin Rinks and Sprinker</li> <li>* The sport of hockey is expanding in the State with a second professional hockey team (PWLH) joining the Kraken (NHL) in Seattle this year.</li> <li>* The popularity of the sport will continue to grow locally in the coming years and the demand for an ice arena in Lacey and the rest of Thurston County will become louder. It's only a matter of time!</li> <li>* Offering an ice arena in Lacey has the potential of attracting more residents who prefer or need to live closer to a rink.</li> <li>* An ice arena attracts tourism through hosting events and tournaments.</li> </ul>	<p><b>Reply from Senior Parks Planner Jenny Wilson:</b> Hi Brian, Thanks for reaching out and sharing the background information and your passion for hockey.</p> <p>The Lacey Parks, Culture, and Recreation Comprehensive <a href="#">Plan</a> serves as our guiding document for parks planning.</p> <p>During the development of this plan, we gathered extensive community feedback on desired park amenities. An indoor ice rink was identified as a long-term possibility (2030–2042), contingent on feasibility and partnerships. Nearer-term priorities—outlined in the Parks Capital Improvement Program (pages 144–149) - focus on a mix of new amenities and major replacement projects. Addressing these near-term needs is our first priority.</p> <p>One of the plan's key challenges is identifying a stable funding source. Aging infrastructure, growing community requests, and rising maintenance and operational costs continue to put pressure on available resources. Adding new amenities, even temporary ones, also requires staff capacity that is currently unavailable.</p> <p>Recently, voters were asked to consider forming a <a href="#">Metropolitan Park District</a> to create a long-term, stable funding source for park development and maintenance. Preliminary, unofficial results indicate the measure is not passing. Without this funding, many near-term projects - especially new amenities requiring ongoing maintenance - will likely be delayed or may not move forward. A similar funding proposal also failed in 2018.</p>

		<p>* With the increasingly hot summers it provides a dependable cooling station for local residents.</p> <p>* Oly on Ice does not have the size or ability to host hockey-related activities (I asked).</p> <p>* We've already got 23 Kitchens, so lets add 1 or 2 sheets (of ice).</p> <p>* While my passion lies with ice hockey and is the sport I mention most, I believe other ice sports (figure skating, open skates, curling, speed skating) could thrive in the city if a rink was more accessible to residents.</p> <p>Please call anytime or reply to this e-mail if there is any interest to discuss or can provide guidance on how to turn this vision to reality. It would be my joy and pleasure to have a role in making this happen.</p> <p><a href="#">History of Olympia Ice Arena</a></p> <p>Thank you very much for taking the time to read this message and for the great work you do making Lacey a beautiful place to live.</p> <p>All the best, Brian</p>	<p>You may also consider connecting with the Nisqually Indian Tribe, which plans to develop Quiemuth Village, a 250-acre site in northeast Lacey. Initial concepts for this mixed-use project include retail, housing, recreation, open space, cultural amenities, and a casino-resort.</p> <p>Thank you again for your interest in Lacey Parks. Please feel free to reach out with additional questions or ideas.</p>
8/19/25	Mathew S.	<p>Dear Ms. Wilson and the Lacey Parks Team,</p> <p>I hope this message finds you well. I'm writing to respectfully request consideration for the revitalization of the basketball court at Homann Park, located in the 98503 area of Lacey.</p> <p>As a local resident and frequent visitor to the park, I've noticed that the basketball court is in need of maintenance and repair to ensure safety and accessibility for the many families and children who actively use it. Specifically:</p> <p>*Basketball Rims: one rim is very crooked and show visible signs of aging, making playing difficult and less enjoyable for everyone of all ages. One rim also appears to be hosting an active wasp nest, posing a safety hazard—especially to children.</p>	<p><b>Reply from Parks Maintenance Supervisor Jamie Oakland:</b></p> <p>Good morning Matthew, Thank you for passing along your concerns about Homann Park. We were unaware of the crooked rim so we are glad you brought it to our attention. We have a crew headed out this morning to attempt to adjust the rim so it is level again.</p> <p>We replaced two other backboards and rims at a different park this year. These two hoops are the next on our list to be replaced. Unfortunately, at this point in the year, we are unsure if we will have the budget (\$4000) to replace them this year. We will re-evaluate in October. If there is budget available, we will replace both backboards and rims. If the budget is not available, it will wait until next year.</p>

		<p>*Court Surface: The surface of the court has deteriorated significantly, with excessive cracks and uneven sections that increase the risk of trips and falls. A resurfacing would not only restore functionality but also enhance long-term safety.</p> <p>*Community Use: Homann Park serves as a vital recreational space for local families, and the basketball court is one of its most used amenities. It supports healthy activity, social connection, and youth development. Improving the court would directly benefit a large and diverse portion of the neighborhood.</p> <p>I kindly request that the City consider adding Homann Park's basketball court to its upcoming maintenance or revitalization schedule. I'd also be happy to help collect signatures, photos, or community feedback if helpful in demonstrating local support for the project.</p> <p>Thank you for your continued dedication to Lacey's parks and public spaces. Your work is deeply appreciated by our community.</p> <p>Warm regards, Mathew</p>	<p>As for the court surfacing, I hear your concerns about the deterioration of the surface. The poor condition of the asphalt would likely require complete removal and replacement. That would obviously be a considerably larger capital project. A recent condition assessment of the court estimated the remaining useful life of the asphalt to be 4 years. We plan to make a capital project request to replace the asphalt in accordance with that timeline.</p> <p>The MPD ballot measure that did not pass in this month's primary would have helped to fund capital replacement projects like this, since it did not pass, projects like this will continue to have to compete for general fund dollars that are also needed elsewhere in the City.</p>
8.25.25	Mike O.	<p>Ms. Burbidge, As a resident on Long Lake, I'm honestly not annoyed that the park is currently closed. It makes for a much more enjoyable and much quieter lake - as well as a much safer lake. We are free of the countless paddle boards with no safety equipment. We are free from swimmers in active boating lanes.</p> <p>That said, I hope that the Parks Department will take notice of the cause. The cause is the geese - that go to roost in the park nightly. And geese poop - oh do geese poop. Easily 2 pounds each per day. So a pound of that, per goose, is happening at the park nightly.</p> <p><a href="https://gogeese.com/how-often-do-geese-poop/">https://gogeese.com/how-often-do-geese-poop/</a></p> <p>I also share that, as a resident, I can speak that I personally opposed the funding to build additional park facilities -</p>	<p><b>Reply from Director Jen Burbidge:</b> Hi Mike, Thank you for sending your concerns.</p> <p>Regarding the geese: we are just as frustrated as you about this. We spent \$2,800 in contracted services with USDA's division of Animal and Plant Health Inspection Services (APHIS) in June, removing 64 geese from the park. The geese were trapped, removed from the park and euthanized. There were no geese at the park for 2 weeks after the removal. Since then, a group of 20 – 30 geese have started visiting the park daily. We followed up with APHIS to attempt to remove these geese also, however they were no longer able to remove the geese as the geese are protected after June.</p> <p>We've spent many hours researching alternative deterrents. There aren't good options, but we are</p>

because before Lacey builds new, the city needs to care for the existing parks. This city treasure is definitely not cared for.

My concerns as a Lacey resident:

\* there has been absolutely zero effort made to deter this habit that the geese have established. Nothing visual.

Nothing physical. No effort.

\* nobody cleans up! When the geese get in our yards, we all clean it up and dispose of it. Nobody is cleaning at the park nightly- which makes it gross.

\* the current effort, with a closed park - is nothing. No corrective measure. Just hope it gets better. Leave it closed until it goes away. Meanwhile the geese have just set up camp.

As I write this sitting in my front yard, I'm watching geese by the dozen flock to the Park - the problem there is going to get worse before it gets better, because the problem is being ignored to hope it goes away.

The situation the park has reached is a health crisis. The lack of action by the city to curb the problem is, in my opinion, negligent - and contributing to an ongoing problem that's just getting worse.

I know Long Lake Park is loved by our community, and it's very unfortunate that lifeguards have gone, park cleanliness has gone, and now the park is contributing to an ongoing health crisis.

**Follow-up after response:**

Hello Ms. Burbridge, Thank you for your response - it's sincerely appreciated and enlightening. While I don't believe it's sufficient, knowing now that at least there are efforts is a step up. It would be a great idea to share this work in one of the newsletters that come with our wastewater billings.

When I get geese in my yard for just an hour, it takes usually three hours to fully clean up from that brief moment. If just

considering some of them moving forward. We have recently decided to turn off the irrigation at the park so the grass will go dormant and hopefully be a less desirable place for the geese to roost at night.

Regarding the clean up effort: our parks maintenance staff spent 24 hours of labor after the geese were removed cleaning up all of the goose poop in the park. Since then, we clean up the poop twice a week. Crews diligently blow the droppings into piles, collect them and remove them from the park, a process that takes 12 labor hours per week. Last Friday alone five people spent 3 hours (15 hours of total labor) removing feces from Long Lake Park. In total, parks maintenance staff have spent approximately 90 hours removing goose poop from the park over the last two months.

Regarding the closed swim area: Fecal coliform can come from a number of sources including septic systems around the lake and pet waste. In terms of pet waste, dog poop has by far the highest level of fecal coliform but all sources are bad. Our water resources staff conduct their due diligence with water testing per the Thurston County Public Health Department requirements, and we close the swim area if levels are unsafe for the public.

Please let me know if you have questions about Long Lake Park, and thanks again for sending your feedback.

Jen Burbidge

		<p>half the number you're dealing with were in my yard for eight hours, it would be a full+ time job to keep up with.</p> <p>Two clean-ups a week means that often times there are four days worth of build up before any cleaning. This remains a health hazard being created. And, the labor hours for clean up are substantially less than the lifeguard hours that were simply cut.</p> <p>Long Lake Park is a treasure to our community. I'm so glad to hear it's at least getting some limited love. I hope consideration will be given to making it a clean, sanitary place for our community to enjoy - every day, not just the two days a week it's cleaned with leaf blowers.</p> <p>Thank you again for listening and especially for letting me know that efforts far exceed what I knew about.</p>	
8.29.25	Laura G.	<p>Hi. As many of the retirees, my husband and I frequent daily the Rainier Vista Park to walk our dog. Unfortunately, lately, we and other park users, see an high increase of electric bikes and electric scooters zipping back and forth on the paved paths putting walkers, leashed dogs, and young children at high risk of being hit.</p> <p>This morning, a young man on an electric scooter was riding at a high rate of speed back and forth on the paved paths, lawn and through the parking lot repeatedly. When we tried to ask that he stop riding on the park's paved paths, he belligerently responded who was going to stop him, and continued to ride back and forth. Picture attached is the person we came in contact with.</p> <p>What are the rules for these types of "vehicles" in the parks? We do not see signage addressing this, and feel there should be. We know realistically this situation can be monitored for offenders, but think signage would be of benefit if these are not allowed in the parks.</p>	<p><b>Reply from Senior Parks Planner Jenny Wilson:</b>  Hi Laura, Thank you for reaching out and sharing your observations and concerns regarding e-bike use in Rainier Vista Park. We appreciate you taking the time to document your experience and bring these issues to our attention. Currently, Lacey Parks rules state: "Do not operate a motor vehicle or motorized device of any type anywhere other than designated roadways or parking areas, except for individuals with a mobility disability in possession of valid, state-issued proof of disability." We recognize that e-bikes, while not typically motorized, can reach higher speeds and may create challenges related to safety and enforcement. The Lacey Parks Board has identified this issue as a topic for further discussion and has added it to an upcoming workplan to explore possible rule updates or clarifications. We'll be looking at a range of options to help ensure our parks remain safe and accessible for everyone. Again, thank you for sharing your concerns which will be shared with the Parks Board. Thanks, Jenny</p>

		<p>Thank you for your time in consideration of this situation, and response.</p> <p>Follow-up after response:</p> <p>Yes, am familiar with where signs are at Rainier &amp; other parks. The QR code is nice, but in reality, most people do not know it includes more rules nor would bother to use. Understand sign limitation, but feel the electric vehicle issue is a high enough risk that it should be posted in lieu of less offenses, and as most offenders say there is not a posted sign prohibiting them. Afraid it will take an accident before signs included or park sued. Please reconsider signage. Thank you for time in follow-up to me.</p>	
9.6.25	Zach	<p>Good morning, I am a resident in Lacey and live right next to the Regional Athletic Complex. I saw on your website there was a future phase 3 plan to develop on the Western side of Marvin Rd. I was curious if there will be tennis and pickleball courts? Also, is there a date when that phase 3 construction might start? Thanks! Zach</p>	<p><b>Reply from Senior Parks Planner Jenny Wilson:</b></p> <p>Hi Zach, Thanks for reaching out.</p> <p>There have been recent discussions regarding potential development on the West side of Marvin Road, with funding through an extension of the <u>Capital Area Regional Public Facilities District</u>.</p> <p>Early design concepts for the site included constructing softball/fastpitch/baseball fields, or a combination of a collegiate-level baseball field and multipurpose soccer field. However, cost estimates for developing the west side of Marvin Road exceeded available funding. As a result, the focus has shifted toward enhancing the existing Regional Athletic Complex (RAC). Current plans for RAC improvements include:</p> <ul style="list-style-type: none"> <li>• Converting a second soccer field to synthetic turf</li> <li>• Adding field lighting</li> <li>• Expanding spectator seating</li> <li>• Exploring additional amenities as the design process advances</li> </ul> <p>The funding approach, design concepts, and a full presentation were shared with the City Council on June 10. The recording and materials are available <u>online</u></p> <p>At this time, there are no plans to add tennis or pickleball courts at the RAC. However, funding and plans are in</p>

			<p>place to construct four additional pickleball courts at Rainier Vista Park in the next few years.</p>
--	--	--	--

			<p>Thanks and let me know if you have additional questions! Jenny</p>
--	--	--	---